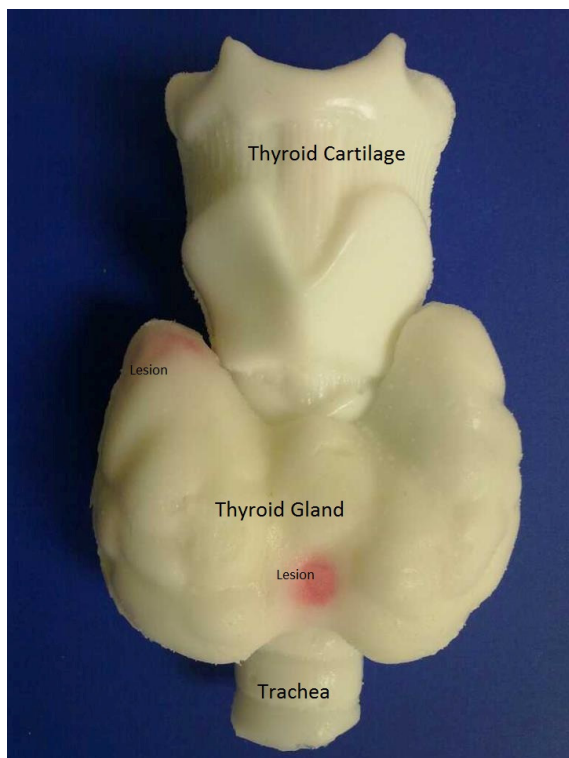


YEZITRONIX Thyroid Ultrasound Phantom

***Most Accurate Thyroid Phantom & Surrounding Tissues
Mimicking Construct for Ultrasound Applications***



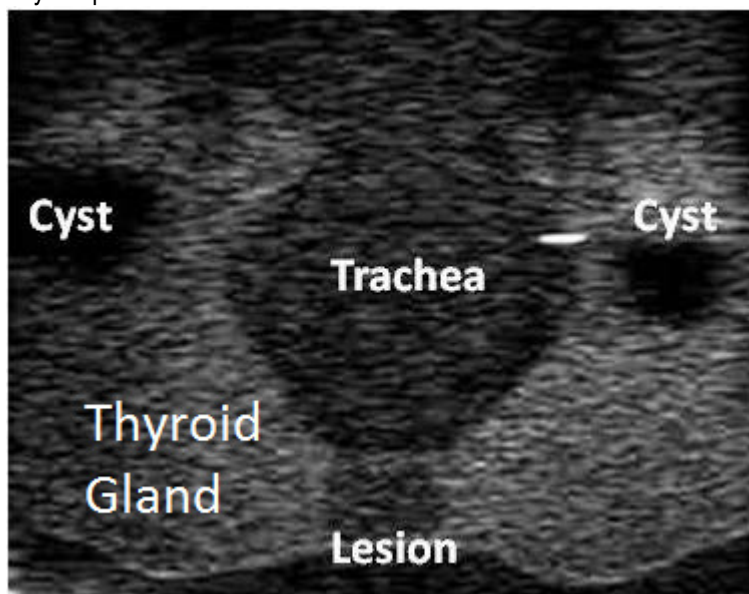
Components of the thyroid phantom

Yezitronix Ultrasound Thyroid Phantom is a multiple usage phantom developed for training and simulation of medical procedures such as ultrasound guided surgery, needle biopsy and ultrasound scanning.

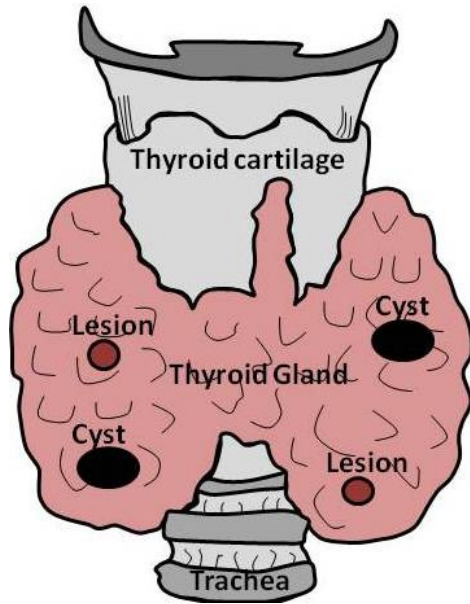
Its ingenious and versatile design makes our thyroid phantom an incredibly useful tool for training of medical procedures.

The thyroid phantom construct mimics the exact 3D shape of real sick person's thyroid.

All organs & tissues are correctly adjusted to mimic exact ultrasound echogenicity



Ultrasound image of the thyroid phantom



Schematic of the thyroid phantom lesions and cysts



Ultrasound thyroid phantom

Specifications:

Multi-layer material – each tissue or organ is independent and has its own characteristics defined by a real 3D shape, echogenicity and mechanical properties. Multiple usage of the same packaged phantom during an extended period of time.

Enclosure dimensions:

L= 20.5 cm; W= 14 cm; H= 9.3 cm

Components

- **Thyroid Cartilage**
- **Thyroid Gland (enlarged from disease)**
- **Trachea**
- **2 cysts**
- **2 lesions**

All components are based on Yezitronix new unique MajesticMix material. Speed of propagation ~ 1540m/s